

WMC -

22 2200

Interface



- ()
 -% FS().....±0.15
 -% FS±0.15
 -% RO().....±0.05
 , 20 -%±0.05

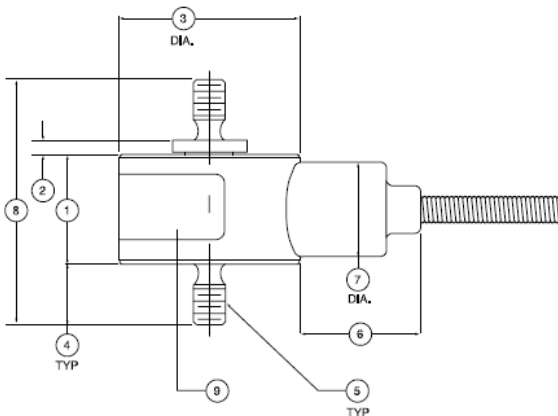
 -°C -10 45
 -°C -54 121
 -%/°F - MAX±0.002
 -% RO/°F - MAX±0.005

 -mV/V2.0
 -% RO().....±2.0
 - (Nominal)350
 - MAX12 VDC
 - > 5000

.....
 - % :
 22 , 45150
 110 - 2200150
 -1,5

1,5

Consult factory for more technical information



.	()							
	22, 45		110, 220, 450		1100, 2200			
	inch		inch		inch			
1	0.45	11.4	0.52	13.21	0.52	13.21		
2	0.06	1.5	0.12	3.05	0.03	0.76		
3	0.75	19.1	1.00	25.4	1.00	25.4		
4	0.25	6.4	0.25	6.4	0.38	9.7		
5	6-32 UNF		10-32 UNF		1/4-28 UNF			
6	0.50	12.7	0.50	12.7	0.50	12.7		
7	0.39	9.9	0.39	6.4	0.39	6.4		
8	1.01	25.6	1.14	29.0	1.31	33.3		
9								